

Panoramic
IRELAND

www.panoramicireland.com

Panoramic Ireland

Kilkenny Guide

What to see and do in Ireland's Marble City

Kilkenny takes its name from *Cill Chainnigh*, the church or monastery founded by Saint Canice here in the 6th century.

Today known as the Marble City or Ireland's Medieval City, Kilkenny is home to many fine buildings dating to the 15th and 16th centuries as well as the 13th century castle and Saint Canice's Cathedral, as seen here.



Kilkenny has a long association with cats, here the traditional custodian of Saint Canice's during a break in mousing duties.

Saint Canice's Cathedral sits high on a hill in Irishtown at one end of the 'Medieval Mile' in Kilkenny.

The 30m-high tower is climbable and gives great views over the city and countryside surrounding Kilkenny.

Kilkenny Castle sits on a commanding position overlooking the River Nore at the other end of the 'Medieval Mile' to Saint Canice's Cathedral.

Dating to the 13th century and originally enclosed by four walls, Oliver Cromwell destroyed the southern wall in 1650 and the castle was later restored to look as it does today.

The park makes a fine place to walk, or sit on a sunny summer's day.





Take a photography tour of Ireland's fine Medieval City with a [Panoramic Ireland Kilkenny Photo Tour](http://www.panoramicireland.com)

Learn how to use your camera, develop your vision and see more of Kilkenny.

Find out more here:

www.panoramicireland.com



Rothe House is a 17th century merchant's house and one of the key buildings that marks Kilkenny as a unique destination in Ireland.

<http://rothehouse.com/>

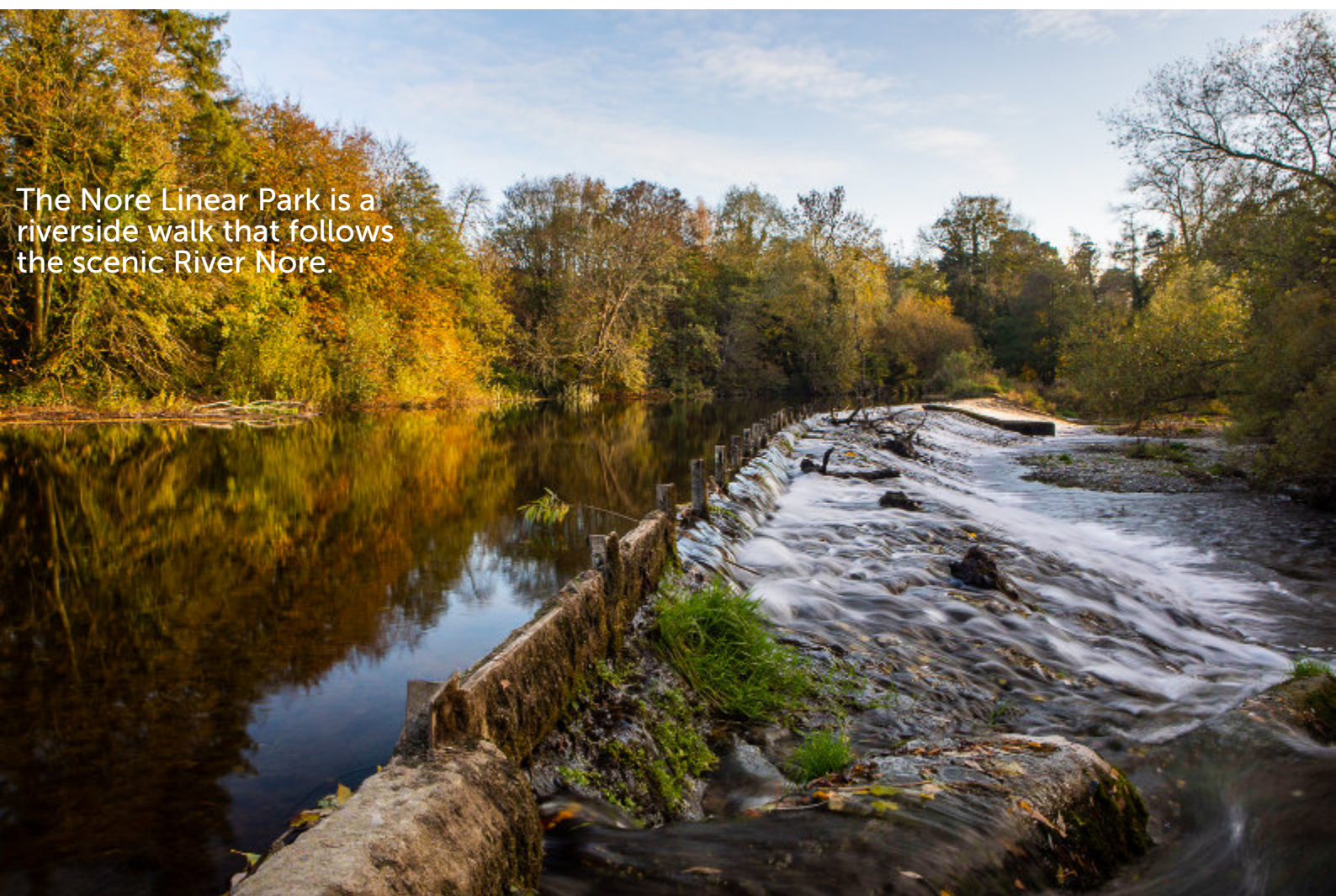




Kilkenny's Medieval Mile museum is located in the old church building above
<https://www.medievalmilemuseum.ie/>



Take a black and amber hop on bus tour through Kilkenny - sporting the traditional colours of the city and county.



The Nore Linear Park is a riverside walk that follows the scenic River Nore.



Kilkenny is home to dozens of pubs, many of which have live music and fine interiors. Here is Tynan's by the river.

Before Arthur Guinness created his eponymous stout Smithwick's was busy brewing beer in Kilkenny since 1710 - known in Ireland as Smithwick's but in other places as Kilkenny.

<https://www.smithwicksexperience.com>





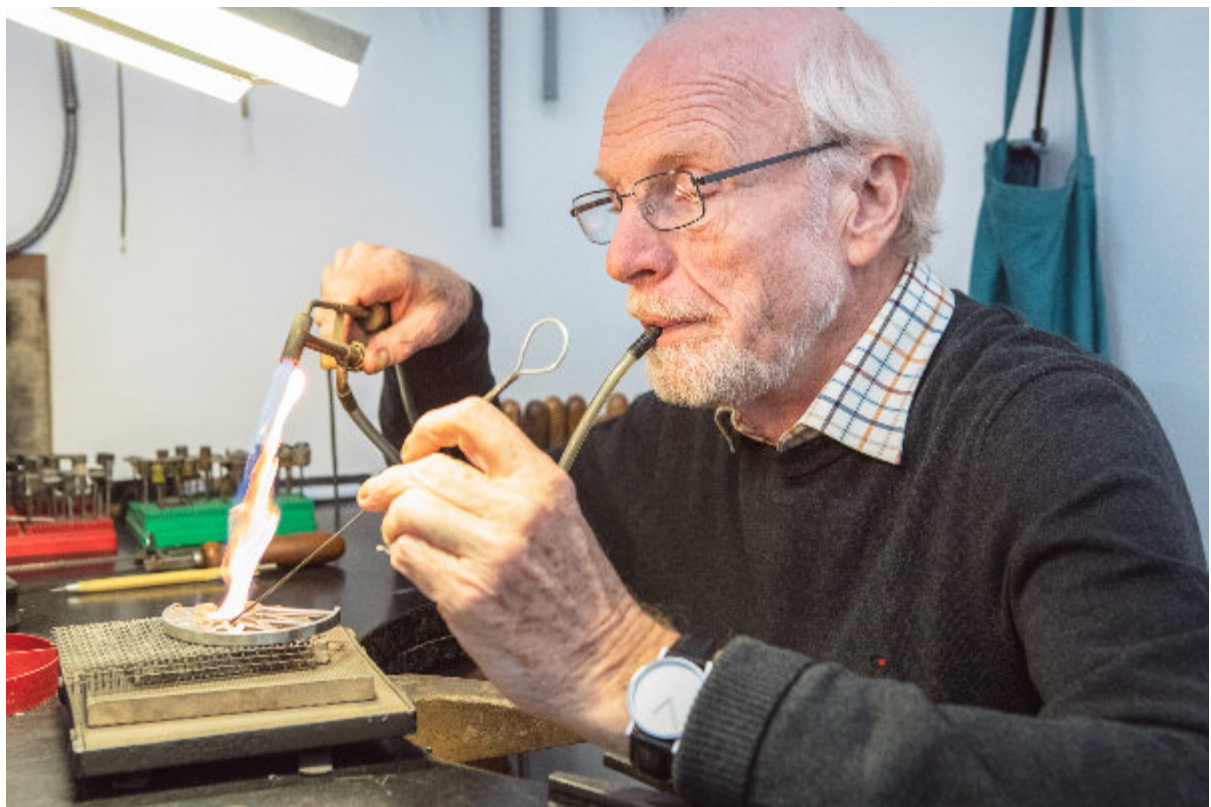
Nicholas Mosse
Bennetsbridge
Co. Kilkenny
<https://nicholasmosse.com>

When it comes to shopping Kilkenny boasts some of the finest locally made craft in Ireland.

Kilkenny is home to Ireland's [National Design and Craft Gallery](#) (right) and ceramicists such as [Nicholas Mosse](#) (bowl, above) as well as one of the founders of the new craft movement in Ireland goldsmith [Rudolf Heltzel](#) seen here (below) making jewellery in his workshop-studio.



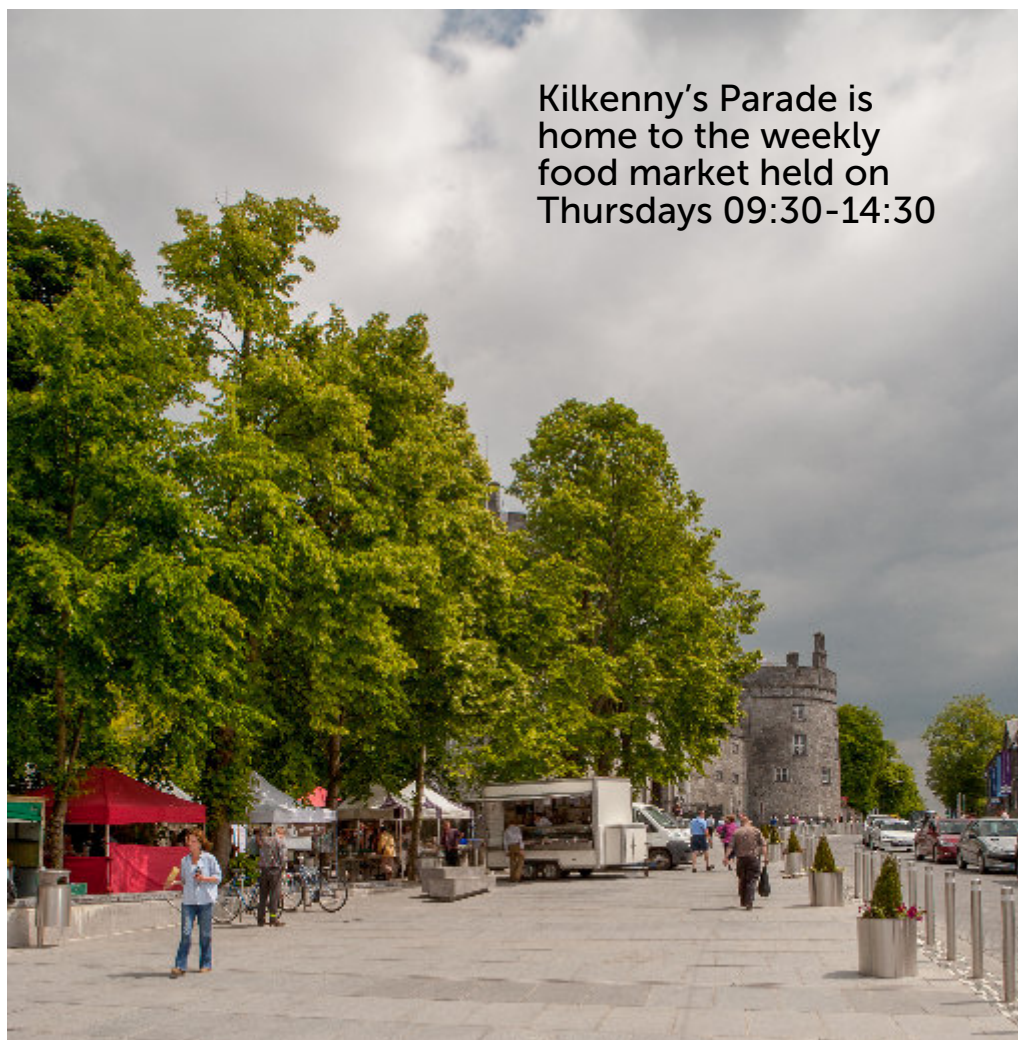
National Design and
Craft Gallery
Castle Yard
Kilkenny



Rudolf Heltzel
10 Patrick Street
Kilkenny
rudolfheltzel.com



Lunch in The Left Bank,
No.1 The Parade
Kilkenny
<https://www.leftbank.ie/>



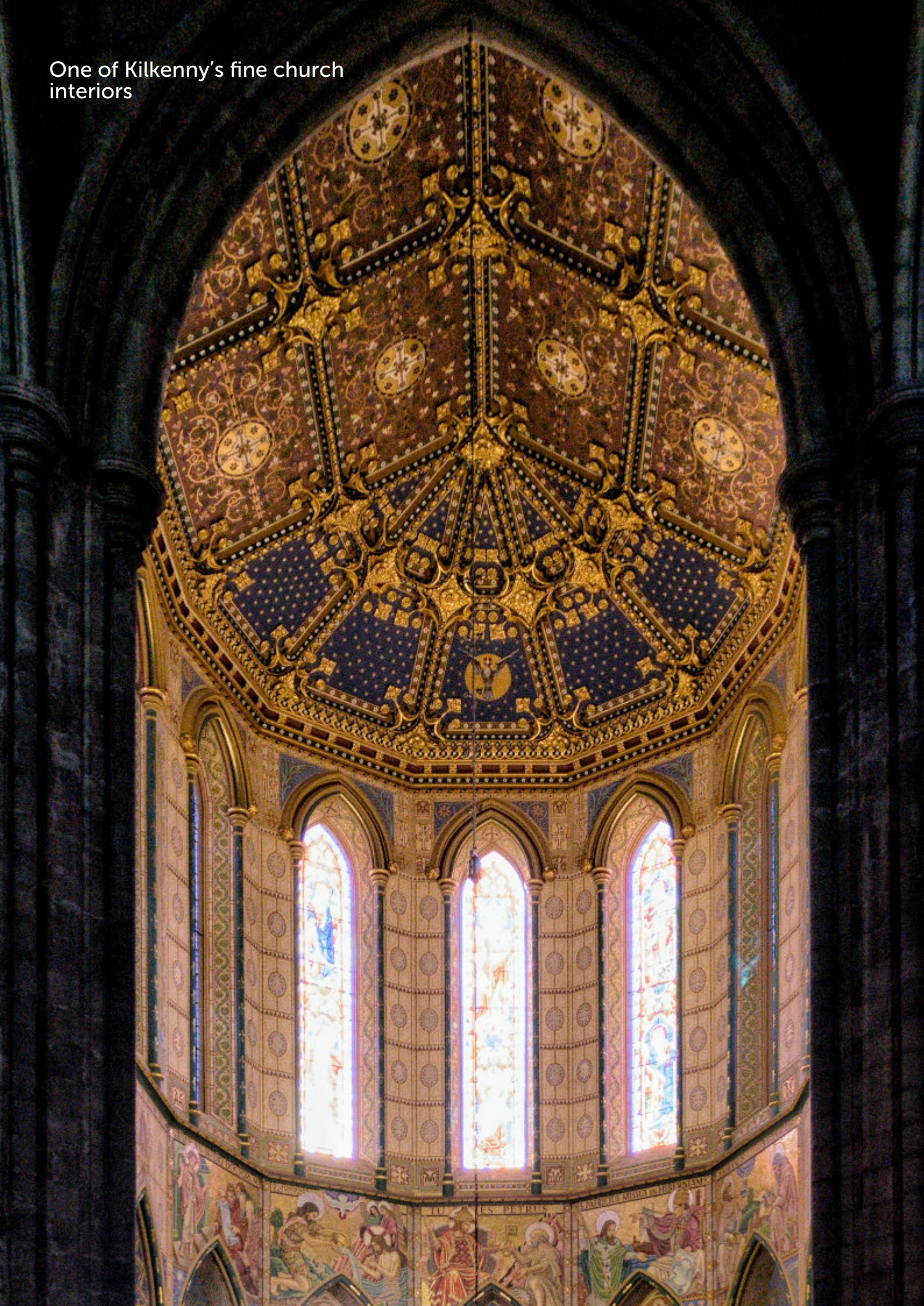
Kilkenny's Parade is
home to the weekly
food market held on
Thursdays 09:30-14:30

Kilkenny boasts many
places to eat, it is known as
a foodie destination and
the range of options in the
city and county include two
Michelin starred
restaurants, gastropubs and
the market beside the
castle on Kilkenny's Parade.

Campagne
5 The Arches,
Gas House Lane
<https://www.campagne.ie/>

Paris Texas
92 High Street
<https://www.paristexas.ie/>

One of Kilkenny's fine church interiors





County Kilkenny's many sights include high crosses, monastic ruins and effigies of medieval knights.



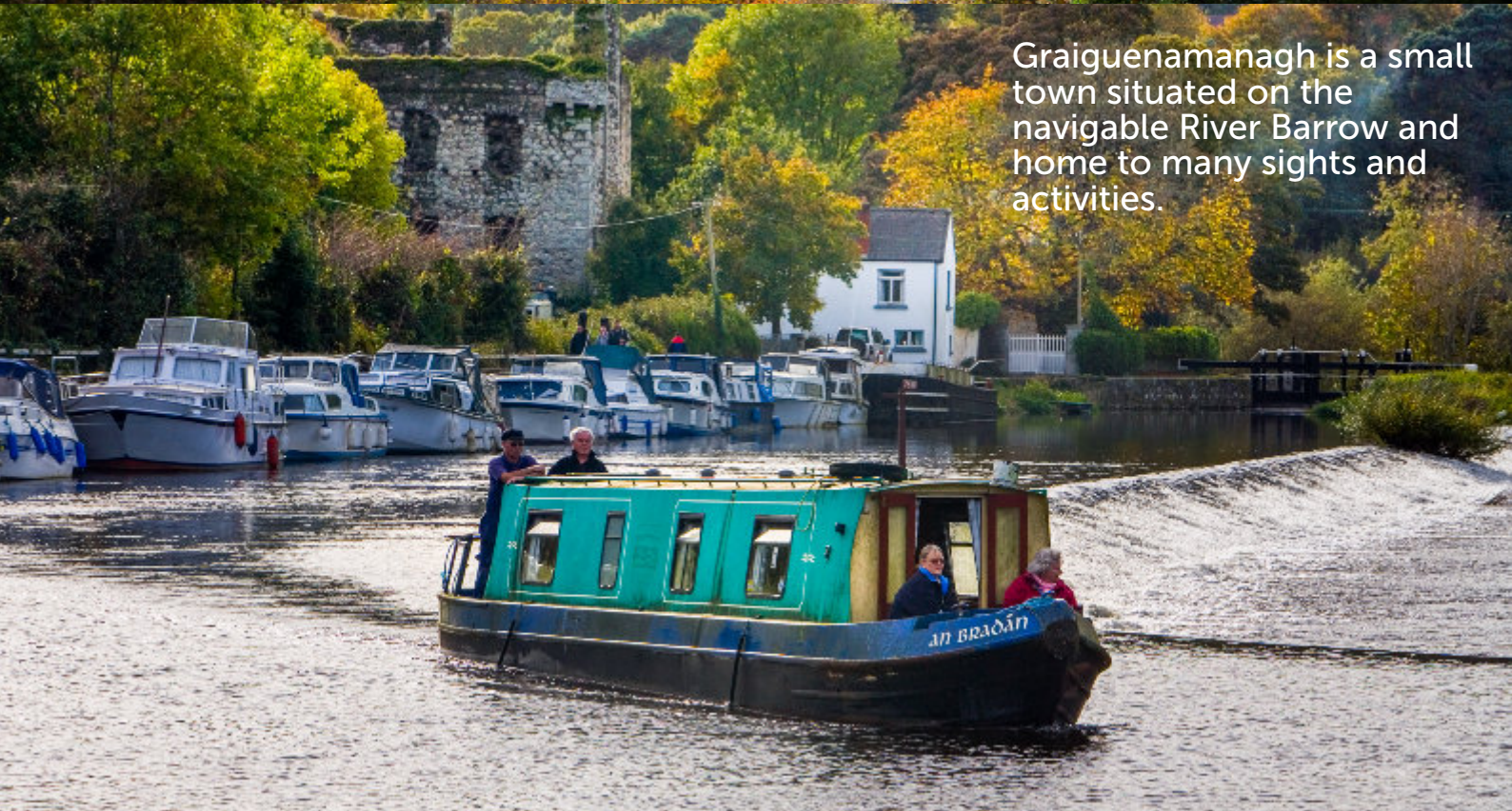


The scenic Kilkenny countryside includes many old bridges and ruins





Inistioge, a scenic village situated on the River Nore has been used as a film location many times.



Graiguenamanagh is a small town situated on the navigable River Barrow and home to many sights and activities.





Kilkenny is situated a comfortable 90 minutes drive from Dublin and is easy to reach from Dublin Airport, Cork, Waterford and Dublin City with motorway making up the most of the journey.

[Irish Rail](#) operates trains to and from Kilkenny on the Dublin to Waterford line.

Bus Eireann, the national bus company, does not run services to or from Kilkenny so use [JJ Kavanagh](#) or [Dublin Coach](#).

For updates to this PDF and for more information on Panoramic Ireland's photography tours and workshops check panoramicireland.com